



The Visitor



February 2016

Issue #12-2

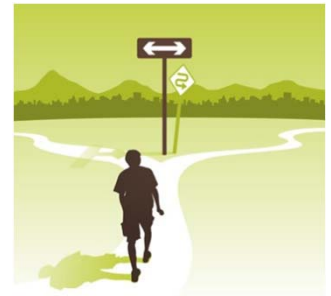
Complex world. Thoughtful church.

601 13th Avenue SE
Minneapolis, Minnesota 55414-1437
Tel. (612) 331-5988 Fax (612) 623-0693
www.ulch.org

*University Lutheran Church of Hope
is a welcoming, Christian community of faith
centered in God's grace and
called to demonstrate God's love for the world.*

Lenten Worship at Hope

After a very fruitful Worship Planning Workshop on January 10, we have begun planning thematic worship content for the Lenten season. A pattern that emerged from our conversations at the workshop spoke of movement and paths – from darkness to light; walking with Jesus to the cross; moving outside our walls; and movement of thoughts becoming inward, penitent, and confessional for the season. We talked about silence and symbols, and what makes us feel reflective.



For Lent, we're going to explore the imagery of "wayfaring" – traveling on foot. We hope to enact many different interpretations of this theme throughout the season and in all our worship experiences. Here is our schedule of worship:

Ash Wednesday, Feb. 10: Services at 12 noon and 7:00 p.m.

Sundays, Feb. 14, 21, and 28, and March 6 and 13: Services at 8:30 and 10:30 a.m.

Wednesday evenings throughout Lent, February 17 and 24, and March 2, 9, and 16: Service in Thorpe Chapel at 7:00 p.m.

Wednesday midday, Feb. 17 and March 16 only: Service in Thorpe Chapel at 1:00 p.m.

Palm Sunday, March 20: Services at 8:30 and 10:30 a.m.

Maundy Thursday, March 24: Service in the sanctuary at 7:00 p.m.

Good Friday, March 25: Service in the sanctuary at 12 noon and at 7:00 p.m.; Off-site "Way of the Cross" service at 4:30 p.m.

Holy Saturday, March 26: Easter Vigil beginning at 7:00 p.m.

Easter Sunday, March 27: Festival Worship at 8:30 and 10:30 a.m. in the sanctuary.

Treasurer's Report for December 2015

December giving was \$51,026.88 and rental income was \$8,993.09, for total income of \$60,019.37. Our giving income was \$4,110.51 over budget and our rental income was \$1,659.09 over budget. Total Income was \$5,769.60 over budget. We ended the year \$5,265.88 under budget.

Our expenses in December were \$51,357.21. Our budget for December expenses was \$42,139.26 which put us over budget by \$9,217.95. Our net income for December was (\$3,448.35). Our net income for the year is \$19,223.30.

Thank you again, for your gifts financially, and in all the other ways you contribute to the life and health of this congregation, as it serves the community here in Southeast Minneapolis, and around the world. It is wonderful to see our members contribute not just their financial resources, but all of the volunteer hours that makes this congregation a vibrant and thoughtful presence in the community.

December 2015 and Year-to-Date Income and Expenses						
Summary	December. Actual	December. Budget	December Over / (Under)	Year to date Actual to 12/31	Year to Date Budget to 12/31	Year to Date O/(U) to 12/31
General Giving	51,026.88	46,916.37	4,110.51	447,544.34	448,300.00	(755.66)
Rental Income	8,993.09	7,334.00	1,659.09	89,736.78	94,247.00	(4,510.22)
Total Income	60,019.97	54,250.37	5,769.60	537,281.12	542,547.00	(5,265.68)
Total Expense	51,357.21	42,139.26	9,217.95	518,057.82	542,547.00	(24,489.18)
Net Income	8,662.76	12,111.11	(3,448.35)	19,223.30	0.00	19,223.30



Total income for the Hope for the Future campaign in December was \$19,000.53. In December we paid out \$6,918.89 for the mortgage and \$2,015.67 for building improvements. Net income was \$10,065.97. Our building fund balance is \$267,691.54.

If you have any questions or comments please contact me at treasurer@ulch.org

Tim Abrahamson, Treasurer

Life Events at Hope

We hold one another in prayer during times of grief, joy, gratitude, and all the experiences in between. We try our best to include everyone (members and others close to the community, births, deaths, marriages...and other pivotal events), but we need your help to stay up to date. This month we include in prayer:

Births: Two new grandchildren in the Rudi family: John Stewart (child of John Rudi and Jessica Connell), and Bradley Rudi (child of Kevin and Kristine). A new grandchild, Freya, joined the Ranheim family. A new niece, Evelyn Jean, joined Zach Busch's family.

Deaths: A number of families in our community have lost loved ones in recent weeks. Pat and Larry Lindquist at the death of Pat's mother, Alice. Uli Koester and Beth Kautz, Lukas and Alex, at the death of Uli's father, Helmut Koester. Audrey Johnson and family at the death of Audrey's husband, Harvey. Leena and Andy Rapacz at the death of Leena's grandmother, Charline. Pastor Amson Hamman and family at the death of Amson's half-sister in Nigeria. Jack and Donna Parry at the death of Jack's sister, Eileen. Leona Reyelts, at the death of her sister-in-law, Mary Ann. Jan Rising Minnich at the death of her husband Jonathan.

Transitions: New jobs, changed jobs, retirement, job searches, and more—God is with us through it all.

Pastor Jen and Pastor Esther and the University Lutheran Church of Hope Staff

Beloved Child of God

This evening as I put our six-year-old to bed, I marked the sign of the cross on her forehead. We don't do this every night, but often enough that it's plenty familiar and much welcomed. I reminded her, as parents do at the end of a long day filled with that wide and crazy-making gamut of childhood emotion, how much I love her and how much God loves her. "You are a beloved child of God." That's when she reached back, as she sometimes does, and marked the cross on my forehead. Truth is, good day or not, I need to feel her warm fingers and these steady promises of our God as much as she does. You are a beloved child of God.



In mid-January in Worship we celebrated Baptism of Jesus Sunday and closed the services dipping in the waters of baptismal promise, marking one another with that same cross. You are a beloved child of God – at the end of Confirmation Class, at the close of the Youth Sexuality Retreat, as you return from Holy Communion, as you scrub dishes or shower or pause in morning lap swimming. Over and over, all through the day, at your best or not, you are a beloved child of God. But – and here's the catch (really, the grace): so is everyone else.

Thomas Merton, in *Conjectures of a Guilty Bystander*, has a wonderful line: "In Louisville, at the corner of Fourth and Walnut, in the center of the shopping district, I was suddenly overwhelmed with the realization that I loved all these people, that they were mine and I theirs, that we could not be alien to one another even though we were total strangers." There is something transformative about approaching one another not only from our own sense of being God's beloved, but also believing and trusting that they, too, are God's beloved.

Skip forward to Ash Wednesday, this year on February 10. With that same pattern we'll dip ashy fingers, offering a correlating truth just as profound: Remember that you are dust, and to dust you shall return. In our culture and time, often so fearful of our own mortality, I'm not sure that we understand these words with the freedom and promise they hold. At their core, they too are grace: all those good works, all that striving, all the ways we build up our mortal shells; we are most honestly, mortal, frail flesh, saint and sinner, simultaneously...and yet, still, always and forever, beloved of Christ. Always. Forever. Beloved. Thanks be to God.

Pastor Jen

Campus Activities

Lutheran Campus Ministry

Lutheran Campus Ministry is a student ministry of the ELCA in partnership with University Lutheran Church of Hope and Grace University Lutheran Church. Campus Pastor Kate Reuer Welton is available for coffee or connecting (612-605-8010 or pastorkate@umnlutheran.org). Check out the website (www.umnlutheran.org) for more about the 9:00 p.m. Wednesday evening service called "Pause" and Tuesday Soup from 11:30-1:30 p.m. Both are usually at Grace University Lutheran Church.

Beer and Hymns on Feb. 4.

You of ALL ages, join young adults and grad students from University Lutheran Church of Hope, Grace University Lutheran Church, and Lutheran Campus Ministry to sing some favorite hymns over a brew. Bring yourselves and your friends! We'll be at Blarney's Pub and Grill (basement) at 7:30 p.m. on Thursday, Feb. 4. Parking is available at Hope.

FAITH FORMATION NEWS



Faith Formation for All Ages on Sunday Mornings

Intergenerational Event on February 14

Children, youth, adults: We'll take a break from our usual Faith Formation schedule to create and gather together for an Intergenerational Event on Sunday, February 14, beginning at 9:15 a.m. Come and join the fun as we team up across our usual lines and get to know one another better.

Godly Play

Our youngest children (ages 3-6 years) gather for faith formation each Sunday using Godly Play. Godly Play creates sacred space to hear and learn Bible stories using objects and play. The students and teachers wonder together and then children are encouraged to respond to the stories on their own terms using art materials. During February in Godly Play, we'll be studying these four bible stories:

- The Good Samaritan
- Jesus in the Wilderness
- Jesus and the Children
- Wheat and Weeds.

Godly Play students have music once a month.



Creation Stations



Creation Stations

Creation Stations is our name for Faith Formation for 6 year olds through 6th graders. The goal of Creation Stations is to learn about the Bible through hands-on activities such as drama, cooking, crafts, and Bible stories. In February, we'll focus on The Good Samaritan and The House on the Rock. Creation Station classes have a short time of music each Sunday, and one Sunday they spend their whole session playing Orff and other rhythm instruments with the leadership of Rosalie Eldevik. New students and helpers are always welcome. Talk with Shelly Parry if you'd like to get involved. Thanks to Shelly and all our volunteer leaders!

Confirmation

Sunday classes meet at 9:15 a.m. in Room 203-204 with Kirsten Mebust. We also have monthly Confirmation Mini-Retreats offering time to eat, serve, study, and worship together. We have seven Confirmation students.



Youth Group

Sunday Morning Youth Group and Sabbath continue in the New Year. Youth Group takes place every Sunday from 9:15 to 10:20 a.m. in the Youth Room. Come and enjoy a space to relax, learn, and have fun. We hold Sabbath the first and third Sundays of each month from 5:00 to 7:00 p.m. here at church. This is a chance to find some rest, get to know each other better, learn, play, and worship. All are invited to these events. If you have any questions, feel free to contact Jim Vitale at jvitale001@luthersem.edu



Adult Forums

(9:15-10:25 a.m. in Heritage Hall, below the Sanctuary)

Feb. 7: The Sacredness of Our Journey

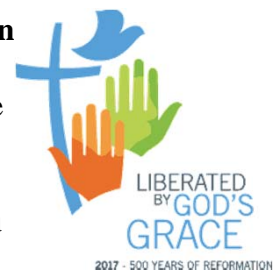
Our Visitation Pastor Esther Dant will reflect on stories of the homebound members with whom she visits on behalf of this congregation. Come to learn more about the sacred journey of those for whom we pray.

Feb. 14: Adults and Children: Living and Growing Together in Faith

Today is an opportunity for all ages to gather together in the lounge for a variety of joint activities that will bring us together across the generations. We will create cards for our homebound members, fill care packages for college students, decorate valentine cookies, and more....Coffee and other beverages will be available as well. We encourage all to come for a spirited time of service and fellowship.

Feb. 21: Global and Ecumenical Commemoration of 500 Years of Reformation

The Lutheran World Federation (LWF) and the Vatican are jointly organizing an ecumenical commemoration to launch a celebration of the 500th anniversary of the Reformation. The event will take place in the Cathedral of Lund, Sweden on Oct. 31, 2016. Luther Seminary Professor Dirk Lange will share insights into this historic event from his perspective as the event planner. This is a conversation you will not want to miss.



Feb. 28 : Animal Rescue and Recovery: Partners with God in Care for Creation

As the congregation embraces the goal of *deepening spirituality*, we are moving into a new theme with the Adult Forum programming. Various members of the congregation have been invited to share how their creative, nurturing spirits come alive in a variety of ways. In this presentation Jo Schroeder and Ruth Hedman will discuss their passion for animal rescue. Ruth volunteers with the Wildlife Rehabilitation Center, and Jo with the Animal Humane Society. Come to hear more about how this activity lifts their sacred spirits.

All That Is, Seen and Unseen

This phrase is from one of the creeds we use in church. “All that is seen” is easy to figure out; just look around! The word “unseen” is more intangible. Things that we can’t see are harder to believe in. And yet, we can’t see wind, thoughts, gravity, radio waves, and electricity, but we know they exist. And as Christians, we can’t see God, and still we believe.

Do you know there is also unseen energy that is all around us and inside of us? Come, explore, and learn about this energy in a free workshop, Monday Feb. 22 at 7:00 p.m. at University Lutheran Church of Hope. Healing practitioner and Hope member Ann Agrimson will provide ways to explore this energy. If you can, please register so we know how many to set up for. You can do that by email at anntim@sprintmail.com or by calling Ann Agrimson at 612-214-6446.

Congregational Life

Annual Meeting on Feb. 7

Please plan to attend the University Lutheran Church of Hope Annual Meeting on Sunday, Feb. 7 following 10:30 a.m. worship. A light fellowship meal will be served. Reports are available now. The meeting agenda includes thanksgiving for the year past, a look at our Vision Goals, financial reports, approval of the 2016 budget, and election of leaders. Please plan to attend.

Fellowship Meal

Our February Fellowship Meal is on Feb. 7 in conjunction with the Annual Meeting. We will not have a meal on the 2nd Sunday (Feb. 14). Help with set up and clean up is needed and appreciated. Looking ahead, our March Fellowship Meal will be on March 13.

Soup Makers Needed

Lutheran Campus Ministry's Tuesday Soup depends on the love of soup makers who bring soup and bread for 25 hungry students. Here are some dates that need to be filled (surely less by the time you receive this newsletter): Feb. 2, 9, 16, and 23; March 1, 8, 22, and 29; April 5, 12, 19, and 26; and May 3 and 10. To sign up, please pick a date and reply to info@umnlutheran.org

Mount Carmel Winter Retreat

Looking for a winter get-away and a chance to get to know our community better? You are invited to join a group from Hope at a winter retreat at Mount Carmel Ministries on Lake Carlos near Alexandria, Saturday, Feb. 13 to Monday, Feb. 15 (Presidents' Weekend). Ski, skate, snowshoe, explore the frozen lake, take some quiet time, and enjoy board games, fellowship, good conversation, and Sunday worship. All meals provided. This is a great opportunity for all ages, singles, families, and kids. If you'd like to attend or to learn more, talk with Bryan Kufus, Pastor Jen, or Jill at Mt. Carmel (340-846-2744) or jill@mountcarmelministries.com

Hope in the World...Bread for the World

Interested in issues of Hunger and the ministry of Bread for the World? Plan to attend the annual Bread for the World workshop on Saturday, March 5 at Christ the King Lutheran Church, 8600 Fremont Ave. S in Bloomington. The topic for 2016 is Child and Maternal Health and Nutrition. Registration begins at 8:30 a.m., with program from 9:00 a.m. to 12 noon. All are welcome to attend. Questions: Contact Vernita Kennen (Metro Bread for the World Team) at vkennen@aol.com.

Plymouth Christian Youth Center Holiday Bazaar

Thank you to all the members and friends of Hope for sharing the gift of giving with the children at the Plymouth Christian Youth Center through the annual gift bazaar. We collected more than 150 gifts, and \$25 in cash. Together with other congregation we helped make a difference to a lot of children.

Gretchen Peik
Plymouth Christian Youth Center

Psalms and Spirituals with the National Lutheran Choir

Join the National Lutheran Choir for *Psalms and Spirituals: A Hymn Festival*, featuring Leonard Bernstein's hopeful, life-affirming *Chichester Psalms* and spirituals by James Miller, Moses Hogan, and André Thomas.

Saturday, Feb. 27, 7:30 p.m.

Shepherd of the Valley Lutheran Church (12850 Johnny Cake Ridge Road, Apple Valley)

Sunday, Feb. 28, 4:00 p.m.

St. Philip the Deacon Lutheran Church (17205 County Rd 6, Plymouth)

Tickets: Adult \$25 | Senior \$23 | Student \$10 | 17 and under FREE

Call Brown Paper Tickets (800) 838-3006 or order online at www.NLCA.com



From the Visitation Pastor: News of our Homebound Members

Yesterday was Holy Communion at Augustana. Our group that gathers in the dining hall is smaller. We miss Helen Good and Winnie Frolen, who were happy they could be a part of this. Eleanor Edstrom, Asti Swain, and Ila Mae Langguth receive communion in their rooms. Each visit brings an awareness of the many stages of life. For many of them, the views out their windows keep changing as they move and move.

Caroling early in December reminded us that community is in so many places. It was good. All ages were part of it, but Diane Greve's grandson Lincoln was the star—especially for Dick Koernig!

Now two new long-time members are added to our visits: Margaret Vainovskis and Marge Perko. How interesting already, the stories they are telling of their lives!

Peace,
Pastor Esther

Senior Group Lenten Journey

The Hope Senior Group will be living in the upcoming days of Lent with meetings that will have a focus on our Lenten theme about our journeys.

Our two meetings in Lent will be **Wednesday Feb. 17** and **Wednesday March 16**. Our schedule will be:

12 noon: Lunch of soup, bread, and cake from Luther Seminary. Donations would be appreciated. No reservations are needed. Following lunch, we will have reports and announcements.

1:00 p.m.: Lenten Worship in Thorpe Chapel, including Holy Communion. Our special focus for these two Wednesdays will be to provide transportation for our homebound members so that as many as possible can join us. We will also be including them and others in our Senior Group to participate in readings, prayers, and serving communion.



Blessings to all,
Pastor Esther

Caring Ministry at University Lutheran Church of Hope

Sunday, Feb. 21, we will celebrate Caring Ministry Sunday. The 10:30 service will include special recognition and thanksgiving for those who have been caring ministers to this congregation and beyond.

The Hope Friendly Visitors Program, now in its 45th year, includes: Founders Verle Rhoades and Bertha Hanson; Director Rosalie Eldevik; Visitors Jeanne Berkeland, Sheila Hougen, Jan Johnson, Beth Kautz, Kathy Knudson, Julaine Kobiske, Uli Koester, Ann Kreider, Ann Lee, Pat Lindquist, Ken Lynes, and Mary Ann Teske.

The Hope Compassion Care Team, now in its 6th year, includes: Leaders Karen Lindesmith, Joan Campbell, and Pastor Esther Dant; Visitors Muffi Abrahamson, Ann Agrimson, Ann Beane, Kathy Carpenter, Mike Fingerson, Ruth Fingerson, Jerry Johnson, Doug Solseth, Mary Sorensen, Carol Steinberg, and Carol Worthington.

We are grateful for each one and look forward to this special day for them.

The University Lutheran Church of Hope Trust Fund

(first in a series about Hope's Trust Fund)

Thirty-some years ago the members of University Lutheran Church of Hope created a congregational Trust Fund, also called an endowment fund. Many churches, along with other non-profit organizations, have these. Endowment funds are a way for churches to receive gifts beyond general congregational giving. They are long-term in focus, usually growing over time and providing congregations with funding for diverse mission opportunities. Their purposes can vary but are often connected to outreach and mission support beyond normal congregational programming.

Where do the gifts come from that make up the endowment fund?

Memorials for loved ones are a common source, as are estate gifts by members and others who wish to leave a legacy gift for strengthening the congregation's life and ministry. Direct contributions can also be made to Hope's Trust Fund.

What happens to the money donated to Hope's Trust Fund?

Most of it goes into long-term investments which in turn provide income which is distributed in the form of annual grants. Some of the money donated, however, can go into special gift funds and be spent for designated purposes.

Who manages the fund and decides where the money should go?

At each annual meeting of the congregation, Hope members are elected to serve on the Hope Trust Board. Once a year they review grant applications and distribute the funds available from the previous year's fund growth and value.

For over three decades faithful Hope members and friends have been supporting the endowment fund of University Lutheran Church of Hope, enabling many forms of financial support for numerous mission opportunities at Hope and in the wider world. Hope's endowment fund is definitely a gift that keeps on giving.

Merrill Morse
Hope Trust Fund

Mark Your Calendars! Summer is Coming!

Summer Day Camp: We are teaming up with other local congregations to offer a shared, ecumenical summer day camp June 27-July 1, 9:00 a.m. to 4 p.m., for children 4 years old through 6th graders. Watch for more details, registration materials, and volunteer information. Questions? Contact Pastor Jen.

Summer Camp at Luther Crest Bible Camp: Children are invited to join in camping at Luther Crest Bible Camp near Alexandria. We are encouraging children to attend the week of June 19-24, in coordination with groups from Our Saviour's Lutheran and Calvary Lutheran in south Minneapolis, but any week that fits your family's schedule is great. Camp brochures are available now. Want to sign up? Talk with Pastor Jen.

Camp Amnicon: A youth trip to Camp Amnicon is planned for July 17-22. This year we will backpack on the Superior Hiking Trail through the Sawtooth Mountains. Youth and parents, talk with Youth Director Jim Vitale if you'd like to participate or to learn more.

Local Mission Trip: Sometimes groups head across the country or around the world to do faith-based mission and service. Truth is, there is mission to do and much to learn very close to home. This year our youth are planning for a local mission trip, right here in Minneapolis in conjunction with the Greater Minneapolis Council of Churches. We are currently looking for the best date for this event. Talk with Youth Director Jim Vitale to learn more.

Luther College Nordic Choir in Concert Here at Hope

On Monday evening Feb. 1 at 7 p.m., the renowned Nordic Choir of Luther College, conducted by Dr. Allen Hightower, will perform a concert in our sanctuary. The concert is presented as part of the choir's West Coast tour, with stops in Washington, Oregon, California, and Arizona. Tickets for the concert are \$20 for adults and \$10 for students, and can be purchased in advance online at tickets.luther.edu or by phone at (800)4-LUTHER. Tickets are also available at the door.

Founded in 1946, Nordic Choir enjoys international acclaim as a premier collegiate choral ensemble. Nordic Choir has toured extensively throughout the U.S., performing in churches of all denominations, schools, and concert halls, including Lincoln Center in New York City; the Kennedy Center in Washington, D.C.; Orchestra Hall in Chicago; Orchestra Hall and the Historic State Theatre in Minneapolis; the Ordway Theater in St. Paul; Walt Disney Concert Hall and the Crystal Cathedral in Los Angeles; and the Mormon Tabernacle in Salt Lake City. For information about how you can help with the concert or provide hospitality to the choir here at church, contact Zach Busch at zachb@ulch.org

Children, Youth and Families Transition Team

From our Vision Goals: "Revitalizing our Ministry with Youth and Children. Goal: Explore where we can go with this ministry and how it can be staffed."

We've engaged the services of InterServe Ministries to help us work toward this goal. A new team, the Children, Youth, and Family Transition Team, is nearly in place and begins working this month. Watch for a listing of those on this team. If you would like to learn more or get involved, contact Education Commissioner Kirsten Mebust at Kirsten.mebust@gmail.com or Youth and Young Adult Commissioner Leena Rapacz at leenahaugland@gmail.com

Hope Book Club

February Book: *This Changes Everything: Capitalism vs. the Climate*, by Naomi Klein
February 14, 2016, 7:00 p.m. in the Hope Library

Forget everything you think you know about global warming. The really inconvenient truth is that it's not about carbon—it's about capitalism.



The convenient truth is that we can seize this existential crisis to transform our failed economic system and build something radically better. In her most provocative book yet, Naomi Klein, author of the global bestsellers *The Shock Doctrine* and *No Logo*, tackles the most profound threat humanity has ever faced: the war our economic model is waging against life on earth.

<http://thischangeseverything.org/book/>

Mar. 13: *The Senator Next Door: A Memoir from the Heartland*, by Amy Klobuchar.
Please contact Sonja Peterson with book suggestions or questions at 612-789-0397 or peterston@dunnwald.com

"There are worse crimes than burning books. One of them is not reading them." Ray Bradbury

President's Perspective

Where do you fit in? Do you have a particular place you tend to sit during worship? Who do you talk to during coffee hour or fellowship meals? Are you a regular at the Adult Forum or choir rehearsal? Is your place in the kitchen, the Sunday School classroom, or the garden? When was the last time you met someone new at church?

Many of us enjoy and appreciate the sense of community we share at Hope. We feel we belong here and are comfortable in our routines. That's a good thing – we are nurtured and strengthened to live out our faith! At the same time, if we want to continue to grow both personally and as a congregation, we need to engage with new people, experiences, and challenges. During worship in January, we've had the opportunity to do just that. On Epiphany, we moved about the sanctuary to experience Epiphany in new ways – contemplating poetry, receiving healing touch, letting our prayers rise like incense, leaving our baggage behind, and lighting candles. The following week to remember our baptism, we met around the font, played in the water, and told each other we are beloved children of God. I invite you to continue to “mix it up” during worship in the coming weeks by sitting in a new place. Just by moving backward or forward 5 pews, you'll get a new view of the congregation and a different worship experience. You may get to share the peace with a college student, hear a new voice behind you, observe grandparents worshipping with young children, or see teens singing hymns in the balcony. Outside of worship, I encourage you to experience the community and mission of University Lutheran Church of Hope from a new vantage point as well. Starting with your familiar groups and routines, consider how you can contribute to our vision goals. There are no tidy lines separating the vision goals from each other, nor is any individual staff person or board member responsible for a particular goal. The goals are intertwined and require input and help from people with diverse interests, experiences, and skills. For example, if you like working in the kitchen, how do food and meals connect with our goal of ministering to youth and children? If we seek to deepen our spirituality, who or what might we begin to notice in our neighborhood?

If you are active in small groups, our engagement in the community and with students is related to how we raise the next generation in the Christian faith. Similarly, as we reconsider ministry with children and youth, how do we see worship strengthening their faith?

Beth Kautz

Congregational President

Funeral Ministry at Hope

When a death occurs and a family has many plans to make, our congregation is ready to support and serve them. The Funeral Reception Committee has prepared a brochure to help members and friends of Hope. The officiating pastor will give the family the brochure; copies are also available in the library.

A member of the Funeral Reception Committee will plan and work with the family to make sure that concerns, wishes, and needs are met. Members of the committee are Leona Reyelts (612-378-2444), Arloene Stevens (612-789-2176), Patricia Frolen (651-644-9343), and Pauline Hendrickson (612-378-9694).

A sincere thank you to the willing and faithful past and current volunteers who carry out this important ministry to grieving families. More assistance is needed. If you are able to help, please complete the form below and return it to the church office or contact a committee member. Thank you! Your participation will be much appreciated and you will be a blessing to the families.

I would like to help with funeral receptions:

Name _____

Phone number _____

I would be able to:

_____ Provide a cake

_____ Help the day of the funeral

_____ Weekdays

_____ Weekends

_____ Give general help with setup, serving, and/or cleanup (circle if you have a preference)

Staff

Pastors:

Rev. Jen Nagel
Rev. Esther Dant

Minister of Worship and Music:

Zach Busch

Youth Director:

James Vitale, Jr.

Business Manager:

Gayle Bidne

Custodian:

Geremew Beshah – weekdays

Working in partnership with Lutheran Campus Ministry

Tim Schroeder
Rev. Kate Reuer Welton

Vision & Governance Board

Officers:

President: Beth Kautz
Vice President: John Rydeen
Past President: Doug Hartmann
Treasurer: Tim Abrahamson

Ministry Areas:

Worship & Music: Paul Odenbach

Youth & Young Adults:

Leena Haugland Rapacz

Education: Kirsten Mebust

Hope in the World: Bruce Eldevik

Relational Ministries:

Nancy Swanson

Operations:

Tim Abrahamson

Doug Hartmann

Leadership Development

& Communications:

Beth Kautz

John Rydeen

The Visitor

The Visitor is published monthly by University Lutheran Church of Hope, 601 13th Ave. SE, Minneapolis, MN 55414-1437.

Articles for *The Visitor* may be submitted via e-mail or directly to the church office. They must be signed. Electronic submissions in either Microsoft® Word or plain text format are strongly preferred. Articles may be edited for length. Contributors are responsible for clearly identifying any material that is from published sources and for obtaining appropriate permission(s) to republish. Send submissions and correspondence to visitor@ulch.org.

The deadline for submitting articles is the 15th of every month, for the following month's issue.

Copies of the current issue of *The Visitor*, as well as back issues, are at www.ulch.org/VisitorArchive.asp or by contacting the church office.

Printed on 100% Recycled Paper.
30% Post-Consumer Waste.



UNIVERSITY LUTHERAN
CHURCH OF HOPE
601 13th Avenue SE
Minneapolis, Minnesota 55414-1437
Return Service Requested

NON-PROFIT
ORG.
U.S. POSTAGE
PAID
Twin Cities, Minnesota
Permit No. 944