

Wednesday Evening  
Lenten Service  
March 1, 8, 15, 22 & 29, 2023  
7:00 PM



---

**University Lutheran Church of Hope** is a welcoming, Christian community of faith centered on God's grace and called to demonstrate God's love for the world. University Lutheran Church of Hope is a Reconciling in Christ congregation and a sanctuary congregation with a commitment to racial equity.

---

### **Welcome. Peace be with you.**

**We continue our holy experiment.** We're worshipping together in-person, and also offering a virtual option on YouTube. Welcome to all!

**For those worshipping in-person, please remember:**

- ❖ **Masks are recommended indoors.** They are optional outdoors when distance can be kept.
- ❖ **We honor one another's boundaries** by asking permission to be in close proximity, and finding alternate ways to greet one another and share the peace (a deep bow, the peace sign, an air hug, etc.). We know that our risk levels and comfort differ.
- ❖ **Our COVID-19 Preparedness Plan** is available here: <http://www.ulch.org/ulch-response-to-covid-19>
- ❖ **If you are new to the community** and wish to speak with a Pastor or be included in our communication and activities, fill out the blue slip in the pew rack and give it to an usher. We'll follow up. It's also just fine to be anonymous. To get more involved, check out our website: <http://www.ulch.org/> To receive the weekly enews, the Thursday Epistle, contact our church administrator at [ulch@ulch.org](mailto:ulch@ulch.org).
- ❖ **Children are welcome in worship.** Kids, grab your SPARK Story Bibles. Craft tables are available for families.
- ❖ **After worship, take time for fellowship and conversation.** The lounge, courtyard, and patio are great spots to linger and connect!

These Wednesday Lenten services incorporate some of the pillar stories of scripture from the Easter Vigil.

+ Indicates the assembly stand as able.

Assembly parts are marked in **bold**.

ELW refers to the red hymnal, *Evangelical Lutheran Worship*.

ACS refers to *All Creation Sings*, an ELW supplement.

## Prelude

### + Lenten Hymn

### + Opening Dialogue

Behold, now is the acceptable time;

**now is the day of salvation.**

Turn us again, O God of our salvation,

**that the light of your face may shine on us.**

May your justice shine like the sun;

**and may the poor be lifted up.**

## Psalmody

ELW 232

## Reading

**Week 1: Creation** - Genesis 1:1-2:4a

**Week 2: Flood** - Genesis 7:1-5, 11-18, 8:6-18, 9:8-13

**Week 3: Deliverance of the Red Sea** - Exodus 14:10-31, 15:20-21

**Week 4: Salvation Freely Offered** - Isaiah 55:1-11

**Week 5: Deliverance from the Fiery Furnace** - Daniel 3:1-29

## Time of Reflection with poetry or a prompt, concluding in silence

Long ago God spoke to our ancestors in many and various ways by the prophets,

**But in these last days God has spoken to us by the Son.**

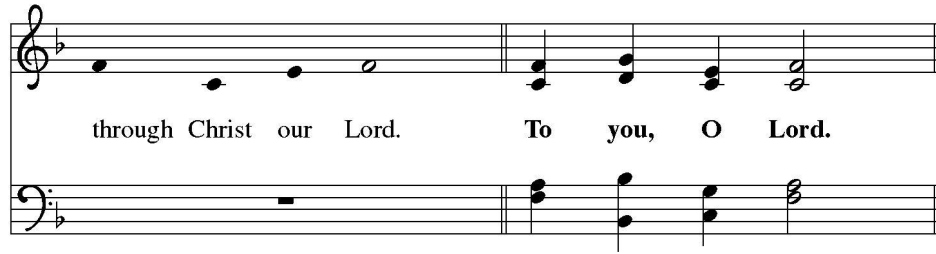
### + Prayer Litany

Each prayer petition concludes with the prayer leader singing "let us pray to the Lord", followed by the congregation singing "Lord, have mercy."

In peace, let us pray to the Lord.

Lord, have mer - cy.

*At the conclusion of the prayer petitions, the following is sung:*



### + The Lord's Prayer

**Our Creator, Our Mother, Our Father in heaven, hallowed be your name, your kingdom come, your will be done, on earth as in heaven. Give us today our daily bread. Forgive us our sins as we forgive those who sin against us. Save us from the time of trial and deliver us from evil. For the kingdom, the power, and the glory are yours, now and forever. Amen.**

**Creador nuestro, Madre nuestra, Padre nuestro que estás en el cielo, santificado sea tu nombre. Venga tu reino. Hágase tu voluntad en la tierra como en el cielo. Danos hoy nuestro pan de cada día. Perdona nuestras ofensas como también nosotros perdonamos a los que nos ofenden. No nos dejes caer en tentación y líbranos del mal. Porque tuyo es el reino, tuyo es el poder y tuya es la gloria, ahora y siempre. Amén.**

### + Evening Hymn

#### + Blessing

God, the giver of love,  
Christ, the resurrection and the life,  
and the Holy Spirit of rebirth  
+ bless you in this Lenten journey.  
**Amen.**

Go in peace, Christ goes with you.  
**Thanks be to God.**

*All are invited to share the peace of Christ as they depart using these or similar words:  
"Peace be with you" or "La paz del Señor."*

*Turn  
Us  
Again,  
O God*

**Staff at University Lutheran  
Church of Hope**

**Lead Pastor**

Rev. Jen Nagel (Pronouns: she/her)  
jenn@ulch.org

**Pastor for Care and Nurture**

Rev. Maria Anderson-Lippert (she/her)  
mariaa@ulch.org

**Minister of Worship and Music**

Robert Ragoonanan (he/him)  
robertr@ulch.org

**Pastoral Intern**

Emily Brown (she/her)  
ebrown001@luthersem.edu

**Minister of Faith Formation**

Morgan Strudthoff (she/her)  
morgans@ulch.org

**Church Administrator**

Nathan Obrestad (he/him)  
nathano@ulch.org

**Financial Administrator**

Kari Olson (she/her)  
kario@ulch.org

**Sunday Opener/Closer, Worship Tech**

Seth Strudthoff (he/him)  
seth.strudthoff@midlandu.edu

**Custodian**

Geremew Beshah (he/him)

**Lutheran Campus Pastor**

Kate Reuer Welton (she/her)  
kate@umnlutheran.org

**GivePlus Mobile App for Online Giving**

Give+ Mobile App is free to download and use and includes ACH or debit/credit card processing. Benefits of GivePlus Church for Apple and Android devices include the ability to set up recurring donations and make a one-time donation without setting up an account. Search for "GivePlus Church" in the App Store or Google Play. The church's name is listed as "University Lutheran Churc" (Yes, omit the last "h").

**Giving by Text**

To initiate a transaction, text 612.294.7621 and enter the amount as a text message. The first time, use the link indicated to load a credit card with account number, expiration date, and CVV number.

**Copyright Acknowledgments**

Texts and parts of the liturgy from sundaysandseasons.com unless otherwise noted.

Copyright 2012 Augsburg Fortress. All rights reserved.

Reprinted by permission under Augsburg Fortress Liturgies Annual License #3625.

Printed music throughout the service reprinted under OneLicense A-707451 unless otherwise noted.

Scripture excerpts in English from New Revised Standard Version Bible, copyright © 1989 National Council of the Churches of Christ in the United States of America, unless otherwise noted.

Used by permission. All rights reserved worldwide.

Scripture excerpts in Spanish from Santa Biblia, NUEVA VERSIÓN INTERNACIONAL® NVI®

© 1999, 2015 por Biblica, Inc.®

Usado con permiso de Biblica, Inc.®

Reservados todos los derechos en todo el mundo.

Used by permission. All rights reserved worldwide.



**University Lutheran Church of Hope**

601 13<sup>th</sup> Avenue SE

Minneapolis, MN 55414-1437

612.331.5988

[www.ulch.org](http://www.ulch.org)

Office hours: 9am to 2pm weekdays